

Kent Active System Management (KASM) Overview:

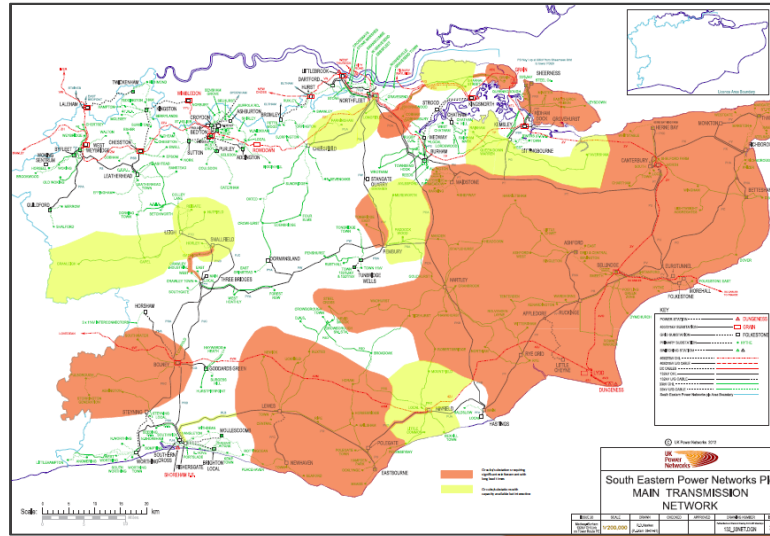
Develop advanced modelling tools that can be used to run the distribution network closer to its limits

The benefits to you:

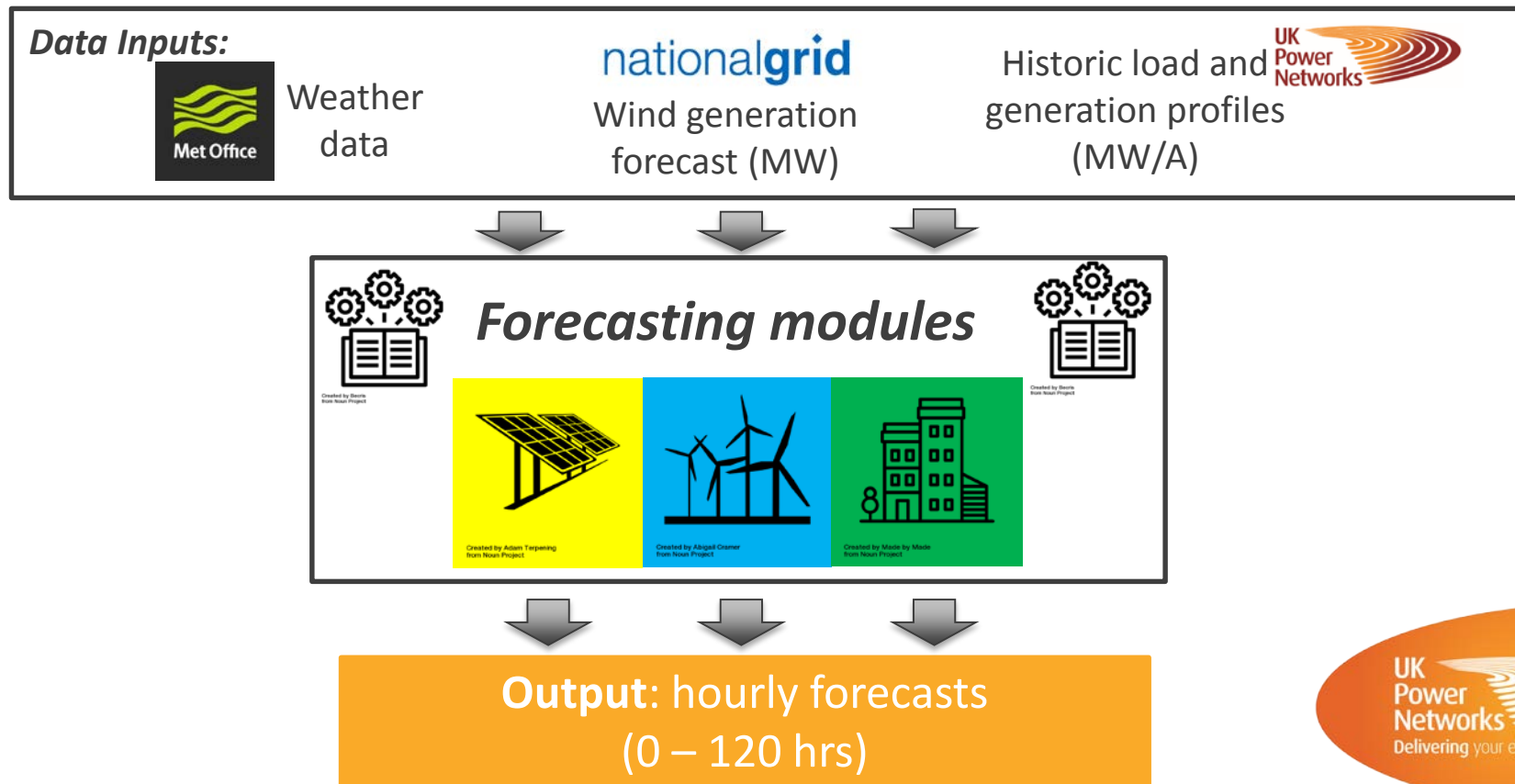
- ✓ Reduce constraints on generators during planned outages
- ✓ Release network capacity for new generation connections

How we achieve this?

1. Enhanced visibility of transmission network
2. Short term forecasting modules
3. Real-time modelling tools



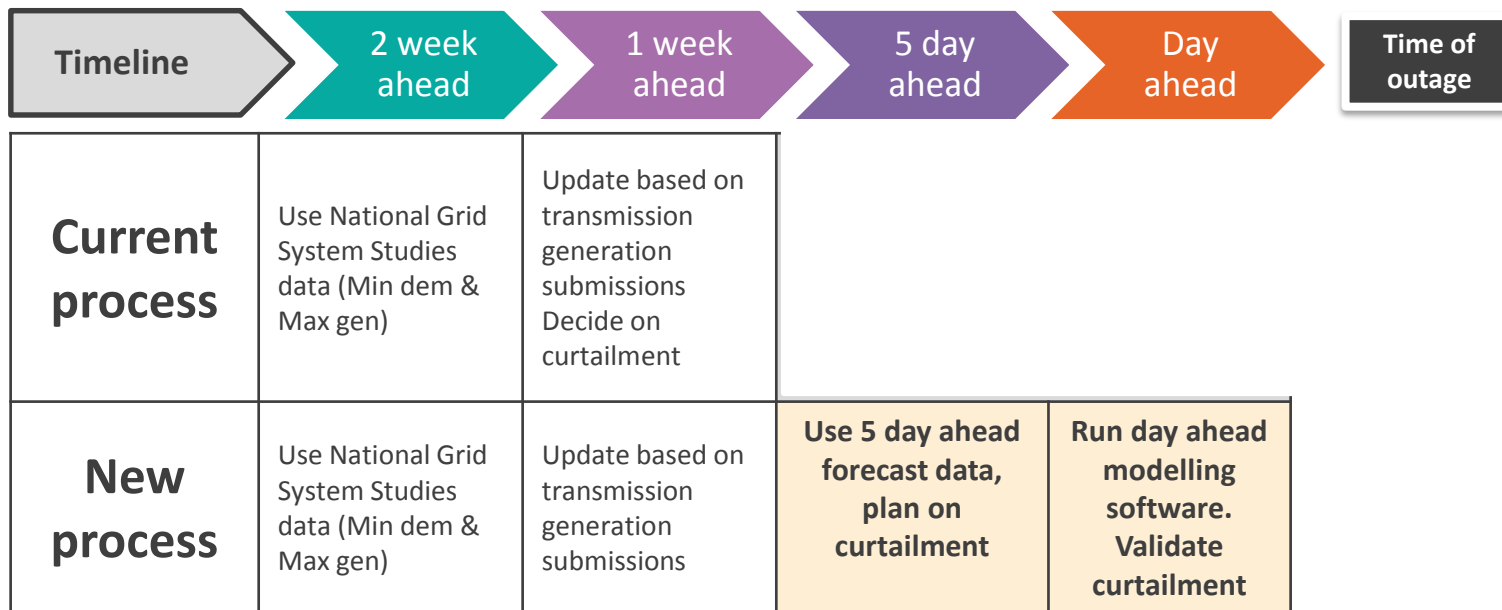
Load and generation forecasting



Aggregating generation GSP level



How does this affect you?



We are developing new tools and processes to facilitate a higher export of distributed generation